

Inside the Park

City of Spring Lake Park Quarterly Newsletter



INSIDE THIS ISSUE:

2	Council Round-Up
3-4	Community News
4	Fire Department
5	Code Enforcement
6-7	Public Safety
8-9	Public Works
9-10	Utility Department
11-12	Recreation
13-14	Recycling
15	Environmental Education

Curbside Appliance and Electronics Recycling

Every Tuesday in January—Beginning January 6, 2026

Contact Haley at 763-792-7240 or hmorrison@slpmn.org for pricing, sign-up and payment (if applicable).

Pick-Up Date

- Tues, January 6
- Tues, January 13
- Tues, January 20
- Tues, January 27

Sign-Up Deadline

- Fri, January 2
- Fri, January 9
- Fri, January 16
- Fri, January 23

Sign-up cutoff is NOON on the designated deadline dates.

Accepted Items:

Appliances

- All household appliances (no ammonia)

Electronics

- Radios
- Scanners
- Speakers
- Stereos
- Telephones
- TVs
- VCRs
- Fax Machine
- Keyboard & Mouse
- Laptop / Laptop Battery
- Monitors
- PDAs / Palm Pilots
- Printers
- Cameras
- CD Players
- Cell phones / batteries
- Computers
- Copiers
- CRTs

Residents are responsible for any costs over \$55.

Spring Lake Park City Hall

1301 81st Avenue NE
Spring Lake Park, MN 55432



Office Hours: 8:00 AM to 4:30 PM (Mon–Fri)

General Information: 763-784-6491

Fax Number: 763-792-7257

Email: info@slpmn.org

Website: www.slpmn.org

City Council

Bob Nelson, Mayor

763-783-1889

rbnelson@slpmn.org

April Moran

218-269-6006

amoran@slpmn.org

Lisa Dircks

612-386-2496

ldircks@slpmn.org

Barbara Goodboe-Bisschoff

763-784-4077

bbisschoff@slpmn.org

Kenneth Wendling

763-784-1936

kwendling@slpmn.org

City Administrator

Daniel Buchholtz

763-784-6491

dbuchholtz@slpmn.org

Important Phone Numbers

Fire & Police Emergency.....9-1-1

Fire (Non-Emergency).....763-786-4436

Police (Non-Emergency).....763-427-1212

City Hall.....763-784-6491

Meeting Broadcast Spring Lake Park Channel 16

City Council Meetings

Live: Every first and third Monday of the month at 7:00 PM

On-demand video link on city website.

Replays: Mon–Sun (1:00 AM, 12:00 PM & 7:00 PM)

Channel 16 Live Streaming 24/7

City Planning Commission Meetings

Live: Every fourth Monday of the month at 7:00 PM

On-demand video link on city website.

Replays: Mon–Fri (7:00 AM, 3:00 PM & 10:00 PM)

Council Round-Up

July

- Accepted the 2024 audited financial statements, which showed strong financial health for both the General Fund and the Public Utility Funds.
- Accepted a \$50,000 donation from the Spring Lake Park Lions to support tree replanting in response to emerald ash borer.
- Approved a new student parking zone on 79th Avenue to address high school parking concerns.
- Finalized a lease with True North Green LLC for a state-licensed cannabis dispensary at 8478 Highway 65 NE.
- Approved a storm lining project on Theoren Terrace to address infiltration of sand into the storm water system.
- Accepted a donation from Keith Schweiger to support the Police Department's Flock Camera program.
- Approved the School Resource Officer contract with Spring Lake Park Schools for the 2025-2026 school year.

August

- Approved a contract with Brycer to implement the Compliance Engine, a cloud-based inspection reporting system for fire alarms and sprinklers, with costs covered by businesses.
- Awarded the Terrace Park Athletic Court Repair Project to Park Construction, converting tennis courts to pickleball courts and repairing basketball courts.
- Approved purchase of six GreenStep City road signs to highlight the City's environmental stewardship and improve grant opportunities.
- Accepted a donation from Carol Uecker and William Tjosvold for the Police Department.
- Approved a 10-year contract with Axon Enterprises for police body cameras, squad cameras, and tasers, projected to save the City over \$220,000 while providing equipment upgrades.
- Accepted letter of resignation from Parks and Recreation Supervisor, Wesley Goldberg.

Continued on Page 3

Spring Lake Park City Meetings on Podcast

Search "Spring Lake Park City Meetings" on Apple, Spotify, Google Podcasts, Podbean, Amazon Music, iHeartRadio, or Pocketcasts. Meetings are available the day following all City meetings.

Connect with Spring Lake Park



Like us on Facebook: [@slpmn](https://www.facebook.com/slpmn)



Follow us on X: [@SpringLkPark](https://twitter.com/SpringLkPark)



Follow us on Instagram: [@springlakeparkmn](https://www.instagram.com/springlakeparkmn)

Council Round-Up Continued

September.

- Revoked the rental license at 857 81st Avenue NE after repeated code violations and lack of compliance.
- Adopted the proposed 2025 tax levy, collectible in 2026, at \$5,030,260, a 6.54% increase over the prior year. (see page 16 for more details)
- Reduced the debt service levy for the 2024A City Hall Improvement bond, utilizing utility and project funds to offset the debt service.
- Awarded contracts to Sun Shower Irrigation for irrigation installation at Triangle Park and Northern Air Corporation for an HVAC maintenance agreement for City Hall.
- Approved an animal control services contract with Companion Animal Care and Control to begin January 1, 2026, ensuring continuity after the Humane Society exits municipal contracts.
- Authorized purchase of two (2) new radar speed notification signs to replace aging TAPCO units on Able Street.
- Approved a conditional job offer to Patrice Holter as Recreation Program Supervisor.
- Accepted a \$8,554 Statewide Health Improvement Partnership (SHIP) grant to replace raised garden beds at Sanburnol Park, with construction to be completed by the high school students in the District 16 trades program.

Updates from City Assessors Mary Wells and Erik Skogquist

2025 Property Review Update: The City Assessors have finished visits to all properties that were due for a 5-year review this year. They will be out in all areas of the city in the next few months, to view work done on permits issued this year (new construction, demolition, decks, additions, etc.), as well as follow up on projects that were in progress at the end of 2024.

2026 Proposed Property Taxes Statements will be mailed out from Anoka County in November. This is a notice showing the preliminary estimate of the property tax amount for 2026. The proposed tax estimate amount is based on preliminary levies submitted by Anoka County, City of Spring Lake Park, School Districts, and other taxing authorities. Dates and times are given for upcoming public meetings for each of the taxing authorities, where property owners may bring questions and concerns about the levy amounts. This notice does not include amounts for waste management fees, special assessments, or school district referenda approved in the fall. More information about these statements can be found online at:
<https://www.anokacountymn.gov/4315/Sample-Notices-Statements>

Other Resources: For more information about MN Property Taxes visit the MN Department of Revenue online page at:
<https://www.revenue.state.mn.us/understanding-property-tax>

A Bus that Comes to YOU!

Get connected with Metro Micro. It's right in your neighborhood!

There's a new service available in your area starting September 15. **Metro Micro** is an affordable, accessible ridesharing service that lets you connect to existing transit routes or take point-to-point trips near Northtown, including areas of Blaine, Coon Rapids, and Spring Lake Park.

Metro Micro pair the comfort and convenience of a private ride with an efficient, affordable shared transit ride.

How it Works:

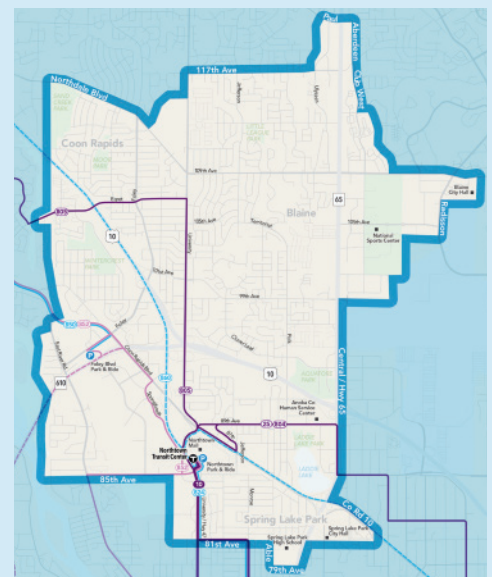
- Download the Metro Micro app from the App Store or Google Play.
- Don't have a smartphone? Call 651-602-1170
- Create an account with your phone number and email address.
- Book a ride, get picked up, and go anywhere within the service area.

It's affordable:

Fare is \$2.50/\$3.25, depending on the time of day. Pay in cash, a Go-To Card or Pass, or the Metro Transit app. Transfers to buses and trains are free for 2.5 hours.

Service Hours:

Monday - Friday: 5:30 AM - 10:30 PM | Saturday & Sunday: 7:00 AM - 10:30 PM | Holiday hours may vary.



👻 Stay Safe This Spooky Season: Halloween Safety Tips for All Ages 🕷️

As Halloween approaches, excitement builds for costumes, candy, and community fun. Whether you're trick-or-treating, attending a party, or handing out goodies at home, safety should always be part of the plan. Here are some essential tips to help ensure a safe and enjoyable Halloween for everyone:

🦋 Costume Safety

- **Be Visible:** Choose bright or reflective costumes, or add glow sticks and reflective tape to help kids be seen in the dark.
- **Watch the Fit:** Make sure costumes fit well to avoid trips and falls. Avoid long capes or oversized shoes.
- **Mask or Makeup?:** Face paint is often safer than masks, which can obstruct vision. Always test makeup for skin sensitivity beforehand.

👤 Trick-or-Treating Tips

- **Stay with a Group:** Children should always be accompanied by an adult or travel in groups.
- **Use Sidewalks:** Stick to sidewalks and cross streets at corners or crosswalks. Avoid cutting through yards or alleys.
- **Check the Candy:** Inspect all treats before eating. Discard anything unwrapped or suspicious.

🚗 For Drivers

- **Slow Down:** Drive extra cautiously in residential areas, especially between 5:30 PM and 9:30 PM when most trick-or-treating occurs.
- **Watch for Kids:** Children may dart out from between parked cars or cross streets unexpectedly.
- **Avoid Distractions:** Stay off your phone and keep your eyes on the road.

🏠 At Home

- **Light It Up:** Keep your porch and walkways well-lit to prevent trips and welcome trick-or-treaters.
- **Pet Safety:** Keep pets indoors and away from the door to avoid stress or accidental escapes.
- **Decorate Safely:** Use battery-operated candles in jack-o'-lanterns to reduce fire risk.

👻 Have a Happy and Safe Halloween! Whether you're dressing up, handing out candy, or enjoying a spooky movie night, a little preparation goes a long way in making the night fun and safe.

2025 Santa Parade Tours

Ho-Ho-Ho! He's makin' a list and checkin' it twice. He's gonna find out who's naughty or nice. The Spring Lake Park-Blaine-Mounds View (SBM) firefighters have reached out to the North Pole and can confirm that Santa's planning on making a special appearance again this year for the annual SBM Santa Parade food drive! Parades will be December 1, 2, 3, and 4 and travel through all three cities. Please watch SBM's website www.sbmfire.org and social media pages for updated information on parade routes and start times as we get closer to Santa's arrival.

Follow SBM on Social Media



Like us on Facebook @SBMFireDept



Follow us on Instagram @SBMFireDept



Follow us on TikTok @SBMFireDept



Code Enforcement News: Nuisance Activities

What is nuisance activity, you may ask?

In a nutshell, nuisance activities are those that can and do affect the quality of life for residents.

Many of the code-related reports that are received relate to nuisance violations, which are generally neighbor-to-neighbor and, often in residential areas. However, they can also crop up in commercial or mixed-use areas.

The goal of Code Enforcement is compliance, **NOT** enforcement. Being a “good neighbor” can head off complaints before they get out of hand and come to the attention of the City or create ongoing tensions between neighbors. Communication is a key factor, so the goal is to get neighbors to communicate with each other, whether it’s discussing property issues or other difficult topics.

Picture this: A Code Enforcement Officer suddenly shows up on your doorstep to discuss the unruly vegetation in your front yard. While our Code Enforcement Officers are very friendly, this can catch people off guard and the initial reaction may be, “Oh no, I’m in trouble and am going to be fined.” **AND** “Did my neighbor report me?”

Now... Picture THIS, instead. Your neighbor’s vegetation is getting out of hand. You have already introduced yourselves to each other by waving or saying “Hi” when you pass, or you’ve taken the time to know your neighbor’s name. That personal touch can be the difference between a nuisance complaint and the following:

“Oh, I’m sorry my grass is so out of control.... my spouse is often away for work and usually handles the yard work. I have three kids and a full-time job, so my free time is limited”.

NOW.... You as a good neighbor might be able to offer, *“Hey, I have a strong and energetic teenager who could easily mow your yard for \$10.00! He also receives credit from his Boy Scout Troop for his community involvement”.*



To summarize: nuisance violations are generally easier to remedy when addressed early on and before they become an insurmountable and overwhelming task. Our Code Enforcement Department is always happy to speak with residents and, together, come up with creative solutions to a problem.

Remember: Communication is essential to being the neighbor you would like to have.

Contact the Code Enforcement Department for specific questions and permit information.

(763) 784-6491
info@slpmn.org
www.slpmn.org

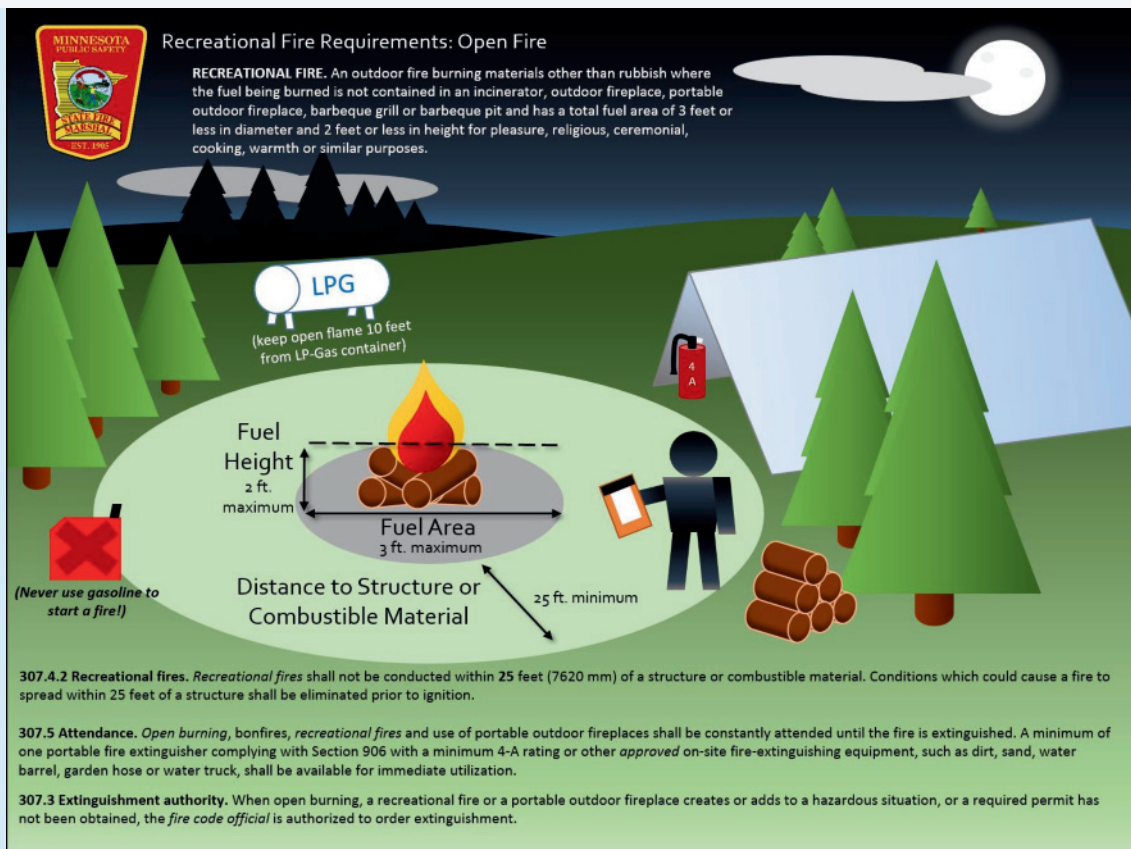
Help Keep Fire Hydrants Clear This Winter

As we prepare for the winter season, we’d like to remind residents of the importance of keeping fire hydrants clear of snow. In the event of a fire, every second counts, and a snow-covered hydrant can delay emergency response. Please take a few extra minutes when shoveling or snow blowing to clear at least three (3) feet around any fire hydrant near your home. This simple act can make a huge difference in keeping your neighborhood safe and ensuring firefighters have quick access in an emergency.



Autumn and Bonfire Safety Tips

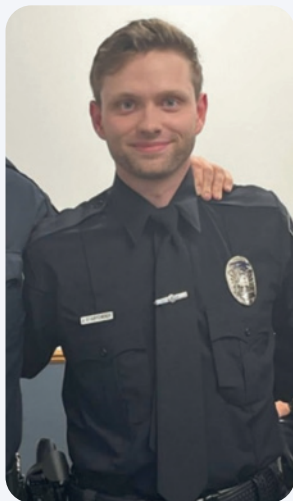
Bonfire season is upon us! Be safe when it comes to enjoying your bonfire this fall. Make sure to keep your open fire 25 feet from any structure, including portable fire pits. State Fire Code and City Ordinance require you to have a fire extinguisher or hose ready to put out the fire, and you must also be in constant attendance. Firewood is the only item that can be burned; no leaves, pine boughs, furniture or lumber are permitted. Remember to obey any fire warnings or burning bans as well.



Getting to Know Your Police Department

We have hired three new officers in the past year, and we are excited for you to get to know them. In this issue, we would like to introduce you to Officer Jacob Stauffeneker. He began his career with Spring Lake Park Police Department on April 11, 2025. He is currently assigned to the Patrol Division.

Officer Stauffeneker was born and raised within Anoka County. After high school, he attended Bemidji State University in 2017, where he earned bachelor's degrees in both Criminal Justice and Business Marketing. While living in Bemidji, he worked at the Beltrami County Jail for about three (3) years as a Corrections Officer, gaining valuable experience that helps in his work today. After returning to the metro area, he completed the Hennepin Technical College Skills Program. In his free time, he enjoys playing and watching hockey and spending time with his family, and he is excited to serve the community. Please say "Hi" to Officer Stauffeneker when you see him on patrol.



Suspicious Activities Awareness

Suspicious activity in your neighborhood can take many forms, and being aware of it is an important part of community safety. This might include unfamiliar vehicles repeatedly driving slowly through the area, individuals peering into windows or trying door handles, or unusual noises at odd hours. Other signs could be strangers loitering without a clear purpose, sudden increases in foot traffic, or unfamiliar people accessing private property. If you notice anything that seems out of the ordinary, it's best to document the details—such as time, location, and descriptions—and report them by calling 9-1-1 and alerting your neighborhood watch group. Staying observant and communicating with neighbors can help deter crime and keep our community safe.



Consider starting a Neighborhood Watch group in your neighborhood. If you need ideas on how to start, check out the National Neighborhood Watch website at nnw.org. If you are interested in being a block captain, email Sgt. Fiske at kfiske@slpmn.org and she will add you to the list. Keep an eye on our Facebook page for possible upcoming meetings.

Winter Will be Here Before We Know it- Things You Should Know

Ice safety is crucial during winter months or in cold climates where lakes, rivers, and ponds freeze over. Always check the thickness and condition of the ice before venturing out—generally, ice should be at least 4 inches thick for walking, 5–7 inches for snowmobiles, and 8–12 inches for vehicles. Clear, blue ice is typically stronger than cloudy or white ice, which may be weaker and less stable. Avoid areas with flowing water, such as near inlets, outlets, or bridges, as the ice there is often thinner. Always carry safety gear like ice picks, a rope, and a flotation device, and never go alone. Being cautious and prepared can prevent accidents and save lives.

Seasonal Parking Restrictions are also right around the corner. City Ordinance 7.08.020 subd. E states there is **no overnight parking on any city street between 2AM and 8AM starting November 1 and continues until March 31.** The ordinance also states if there is a snowfall of two (2) inches or more, all vehicles are required to be removed from the street until it is plowed curb to curb.



When it does snow, please help our Public Works employees by properly removing snow from your driveway. Not only is pushing snow into or across the street illegal, it can also cause damage to the plow equipment. Here is an example of how to clear your driveway to reduce the chance of a large pile of snow after the plow clears your street.

A smart way to shovel your drive

How to reduce the possibility of getting a huge pile of snow in your driveway opening when snowplows clear your street:



Source: Minnesota Department of Transportation Graphic: Jim Freitag, Minneapolis Star Tribune

Prescription Drug Take-Back Program Update

The Spring Lake Park Police Department is no longer a designated drop-off location for prescription drug disposal. However, residents still have several convenient options for safely disposing of unused or expired medications:

- **Anoka County Sheriff's Office** remains a primary drop-off site for all Anoka County residents.
- **Spring Lake Park Hy-Vee Pharmacy** also accepts prescription drugs for proper disposal.
- **Additional participating locations** can be found online at:
<https://www.anokacountymn.gov/2930/Prescription-Drug-Take-Back-Sites>

If you have any questions regarding the Prescription Drug Take-Back program, please feel free to contact the Spring Lake Park Police Department at 763-792-7200.



Contact and Connect with Us

The Police Department would also like to remind you that officers are available to serve our city and its citizens 24 hours a day, 365 days a year. Please call 9-1-1 for any reason, and Anoka County Central Communications will dispatch an officer. We do not dispatch out of our office. If you need to speak with a *specific officer*, police administration or investigator, our front office is available during regular business hours, Monday through Friday, 8:00 AM–4:30 PM. Please call 763-792-7200.

Follow Us on Social Media



Like us on Facebook @slppd



Winter is Coming!

Ready or not, winter is coming. Keeping city streets and sidewalks clear of snow and in safe driving condition is an essential service of the Spring Lake Park Public Works Department. The clearing of residential streets is determined by weather conditions.

The Public Works Staff are concerned about persons, particularly children, near the road and vehicles following too closely behind them as they go about their task of keeping Spring Lake Park streets in good traveling condition. Often times, there are winter snow conditions when the driver must stop his forward motion and back up before continuing on, particularly at intersections. Following too closely can cause an accident. Always exercise extra caution near or around the snowplows.

Here are some additional tips to make everyone's winter much safer:

- Obey parking regulations.
- Slow down – slick pavement reduces traction and can cause loss of control of your vehicle.
- Increase your following distance, use headlights and wear your seatbelt.
- Apply anti-lock brakes steadily.
- Use caution near snow plow equipment, staying at least 50 feet away to reduce the risk of accidents.
- Allow for snow removal equipment's wide turns at intersections.
- Winterize vehicles: check brakes, tires, battery, wiper fluid and wipers.
- Pay attention to weather advisories and leave home earlier than usual.

Where Should You Place Trash and Recycling Bins on Pickup Day?

Winter snow accumulations can pose a challenge when it comes to trash and recycling pickup, so where should you place your bins on pickup day? Trash and recycling bins should be placed at the end of your driveway no further than three (3) feet from the curb. Do not put your bins in the street as this creates a hazard to plow trucks and other passing vehicles. Avoid placing your bins on top of snow piles as the shifting and melting of snow could cause your bins to tip over. The unlevel surface can also make it difficult for the garbage trucks to put your bins back down properly. You may need to clear a level space for your bins to sit safely on pickup day.



Snow Removal from Private Property

Minnesota State Law and City Code prohibit removing snow and ice from private property, including driveways and parking lots, to a roadway, across a roadway or onto a sidewalk or adjacent property.

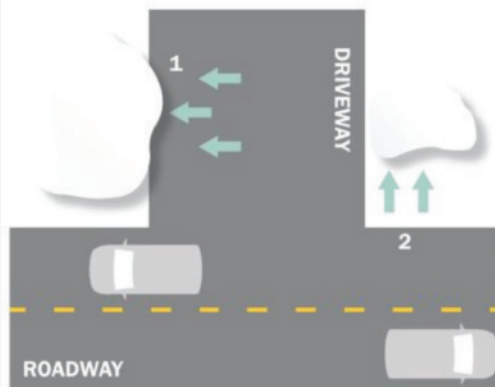
DRIVEWAY SNOW REMOVAL

Recommendations from the Alaska Department of Transportation & Public Facilities



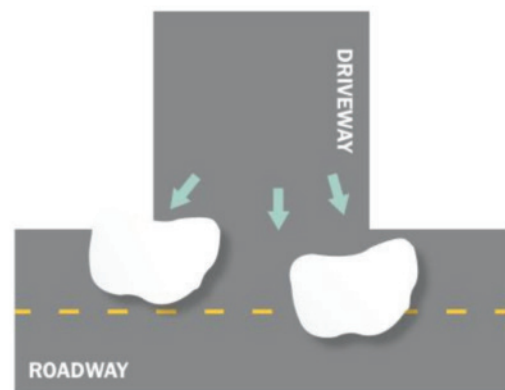
DO this

- 1 Move snow from your driveway onto your property:** Standing, facing the road, move snow over to the right side of your driveway.
- 2 And clear the area by the road on the left side of your driveway.** This gives plows a place to unload snow and helps reduce the chance of a snow berm being created across your driveway.



NOT this

Move snow from driveways into the road or right-of-way: It's illegal to push snow into or across roadways and rights-of-way. This can create a hazard for people traveling the road, such as drivers, bikers and snow removal equipment operators, and can create liability issues for the property owner.



Fall Street Sweeping

Street sweeping is expected to begin the first week of November, weather permitting. It is very difficult for the driver of the sweeper to see all of the activity around them, so please maintain a safe distance from the street sweeper.

PARENTS, PLEASE INSTRUCT YOUR CHILDREN TO STAY AWAY FROM THE SWEEPER.



Mailboxes

This is a good time to check the condition of your mailbox and post to determine if it meets installation requirements. The base of the box should be 48-50" above street level. The post should be 20" back from the curb. The face of the mailbox should line up with the curb.

The snowplow wing needs 48" of height clearance to avoid hitting the box and 20" of distance from the curb to clear the post. The City does NOT assume liability for mailboxes damaged during plowing operations, unless it is determined the plow made direct contact with a mailbox that is properly installed using the standard 4" x 4" post and metal box requirements. Decorative mailboxes are not within the requirements and will not be replaced if damaged. The mailbox should be secured to the base and post and the post securely in the ground; no rotting wood. There should not be any plastic newspaper tubes or attachments to the mailbox below the 48" minimum height requirement.

Tips to Prevent Frozen Water Meters and Pipes

Tips to prevent frozen water meters:

- Make sure warm air is allowed to circulate around your water meter and is free of obstruction. Keep in mind the coldest air is near the floor and along the walls of a basement.
- If your water meter is in a separate room, leave the door open to this room to allow warm air to circulate.
- Keep cabinet doors open if your water meter is inside a cabinet.
- If the water meter is in a crawl space or garage, you may want to consider adding insulation.

Tips to prevent pipes from freezing:

- Insulate any exposed pipes. Be sure to protect pipes with northern exposures, and wrap with UL-approved heat tape. Note: Improper use of heat tape or pipe insulation can cause a fire, so be sure to follow the manufacturer's instructions.
- Keep thermostats set to at least 55 degrees if you plan to leave your home for any amount of time or go on vacation. It is also a good idea to have someone check on the home while you are away and make sure it is staying warm enough to prevent pipe freezing.
- If you plan to be away for a long period of time, drain and shut off the water system completely, except indoor fire sprinkler systems.
- Open cabinet doors under your kitchen and bathroom sinks to allow the heat inside your house to keep your pipes warmer. Keep basement or crawl spaces warm enough to prevent freeze-ups.
- Turn on water faucets and allow hot and cold water to trickle at night from sinks inside your home, especially those located on an exterior wall.

Certification/Tax Lien of Delinquent Utility Fees

City Staff will be reviewing water utility accounts to refer to the City Council for their approval to certify unpaid delinquent balances to the County Auditor. If you are in receipt of a notice from the City, prompt payment would be appreciated. All delinquent accounts certified to the county will be assessed an additional \$125.00 administrative fee. Certification may also include unpaid citations and (or) service invoices.



ANNUAL NOTICE-For Military Personnel

Minnesota law requires that utility providers make utility payment arrangements available to military service personnel in the following situation: A member of a household has been issued orders into active duty, deployment, or has had a change in duty station as long as the residential customer meets specific income criteria and completes the application process. An application must include copies of income statements and proof of military orders as described in the law. A utility provider may shut off utility service for nonpayment if an application does not include the required copies of income statements and proof of military orders as required by Minn. Stat. § 325E.028. Please contact the water utility department for information.



Utility Billing Schedule

1st Quarter	January, February, March	01/01 - 03/31
Billed March 31	Due April 30	
2nd Quarter	April, May, June	04/01 - 06/30
Billed June 30	Due July 30	
3rd Quarter	July, August, September	07/01 - 09/30
Billed September 30	Due October 30	
4th Quarter	October, November, December	10/01 - 12/31
Billed December 31	Due January 30	

If payment is not received by the due date, a 10% late penalty applies.

Utility Payment Options

- **Drop Box**
 - Located outside City Hall entrance: 1301 81st Ave NE
 - Available 24/7
- **Online Bill Pay**
 - Visit our website: www.slpmn.org > Utilities > Payment options
 - Ask for an Online Payment Service Guide handout
- **Phone Payments**
 - Credit / Debit Cards
 - 763-792-7213
- **Recurring Payments**
 - Visit our website: www.slpmn.org > Utilities > Payment options
 - Ask for an Online Payment Service Guide handout
- **Walk-In Payments**
 - City Hall: 1301 81st Ave NE
 - Office Hours: Monday - Friday, 8:00 AM - 4:30 PM



PLEASE NOTE: Postmarks **NOT** accepted. Please allow 7-10 business days for mail delivery and processing.

Accepted Payment Types:

- Cash (small bills or exact change appreciated)
- Checks (personal or cashier)
- Credit / Debit cards
- Money Orders
- Bill Pays

All credit / debit card transactions carry a convenience fee.

Haven't Received Your Utility Bill?

If you normally receive a paper bill and have not received it by the 7th day of the month in which your bill is due, please contact the Utility Billing Department.

If you are signed up for paperless billing, please make sure to check your "Junk" or "Spam" folder in your email. Paperless bills will come from City of Spring Lake Park—Utility Billing noreply@bsacloud.com. You may need to mark this sender as "Not Junk" or "Safe" to see them in your inbox.

Is Your Billing Address Up to Date?

Please inform the City of any changes to your billing address to ensure accurate and timely delivery of your utility bills. Keeping your information current helps avoid delays and disruptions in receiving important billing notices.



Utility Billing: 763-792-7213 | bbrown@slpmn.org



TRICK OR TREAT DANCE PARTY

QC Dance Studio
9967 Ulysses St NE, Blaine, MN 55434



Come "BOO-gie" with us in your favorite costume for a Halloween-themed dance class! We will crawl like spiders, float like ghosts, and dance like skeletons to fun and spooky Halloween songs. Your child will also make a fun craft! Please wear ballet slippers/non-slip socks.

Age(s)	Day(s)	Date(s)	Time	Fee	Deadline
3-6	Sat	Oct 25	10:30 AM-Noon	\$30	Oct 23



DASH Sports Soccer Tykes camps introduce young players to soccer through fun, skill-based games focused on dribbling, passing, and shooting. Players should bring a water bottle and wear athletic clothing; soccer balls are provided.

DASH Soccer

***No class:** Nov 29

Location: Mounds View Community Center

This program is a collaboration between Spring Lake Park, Mounds View, and Arden Hills Parks and Recreation Departments.
Parent participation is required for ages 2-3 and recommended for ages 4+.

Age(s)	Day(s)	Date(s)	Time	Fee	Deadline
Session II					
2-4	Sat	Nov 8-Dec 6	5:30-6:00PM	\$65	Nov 4
5-7	Sat	Nov 8-Dec 6	6:10-6:40PM	\$69	Nov 4

Youth Basketball Developmental Classes

This basketball clinic is the perfect place for young athletes to develop their talents, boost their confidence, and have a blast! Whether your child is a beginner or an experienced player, our clinics cater to all skill levels. With fun drills, exciting games, and team-building activities, your child will love every minute on the court!

***No class:** Nov 29

Location: Mounds View Community Center

This program is a collaboration between Spring Lake Park, Mounds View, and Arden Hills Parks and Recreation Departments.

Fall Session II

Age(s)	Day(s)	Date(s)	Time	Fee	Deadline
Intro to Basketball					
4-10	Sat	Nov 8-Dec 13	9:00-9:30 AM	\$40	Nov 6
Beginner					
4-10	Sat	Nov 8-Dec 13	9:45-10:30 AM	\$45	Nov 6
Intermediate					
4-10	Sat	Nov 8-Dec 13	10:45-11:30 AM	\$45	Nov 6

TEEN OUTING MOA Shopping

Spend the day exploring Mall of America with friends on this teen-only field trip! With plenty of time to shop, snack, and discover, this trip is ideal for those who want some independence in a supervised setting. Whether you're hunting for deals or just along for the food court, there's something for everyone. Participants should bring money for meals and shopping.

Drop off & pick up: Mounds View Community Center

This program is a collaboration between Spring Lake Park, Mounds View, and Arden Hills Parks and Recreation Departments.



Age(s)	Day(s)	Date(s)	Time	Fee	Deadline
13-17	Sat	Dec 6	11:00 AM-5:30 PM	\$40	Dec 4

Adult Classes

Rock Painting with Deb Mandala Rock Creation

Have you ever wanted to tap into your creative side? Explore peace and relaxation while crafting an intricate, original Mandala Rock or Tea Candle.



Class Fee: \$30

Age(s)	Day(s)	Date(s)	Time	Deadline
18+	Fri	Nov 7	1:00-3:00PM	Nov 1

Mixed Media Classes with Mara Gemstone Bracelet Class



Join us for a fun, hands-on evening of bracelet making as you explore the meanings of gemstones and crystals. Choose your own beads, design a piece that reflects your energy, and leave with a beautiful, personalized bracelet—plus a card with the symbolism of your stones. All materials provided!

Class Fee: \$30

Age(s)	Day(s)	Date(s)	Time	Deadline
18+	Thu	Oct 23	6:00-8:30PM	Oct 20

Spruce Tips Workshop

Join us for a festive workshop where you will create a unique spruce tip pot with mixed greenery and accents to enjoy throughout the holiday season.

Instruction and assistance will be available throughout the workshop.



Class Fee: \$55

Age(s)	Day(s)	Date(s)	Time	Deadline
18+	Sat	Nov 15	10:30AM-12:30PM	Nov 3

Family Events

FAMILY HAYRIDE

BUNKER PARK STABLE ~ FALL FEST EVENT

SATURDAY, OCTOBER 25

5:30 PM-7:15 PM

This event is a fun outdoor activity suitable for all ages, perfect for enjoying the crisp fall air and the beauty of nature. Families will meet at Bunker Park Stables where the evening begins at 5:30 PM around a cozy campfire, complete with s'mores. Afterward, enjoy a leisurely hayride from 6:30–7:15 PM through a scenic route. It's a wonderful opportunity to socialize with friends and family, make new memories, and enjoy the simple pleasures of being outdoors.

Fee: \$13

Location: Bunker Park Stable

ELVES AND THE SHOEMAKER

SIDEKICK THEATER

SUNDAY, DECEMBER 7

10:00 AM-3:30 PM

An upbeat, whimsical tale about a troupe of elves who help restore a poor cobbler to prosperity by making a pair of the most fantastic and magical shoes ever seen. This heart-warming adaptation tells of midnight enchantment and of virtue and generosity rewarded. It's the perfect holiday story and great fun for all ages.

Fee: \$55

Location: Spring Lake Park City Hall

Contact Parks & Recreation for registration at 763-792-7201 or recinfo@slpmn.org



Upcoming Recycling Days

October 25

Spring Lake Park City Hall
1301 81st Ave NE

November 8

Recycle Technologies
10040 Davenport St NE, Blaine



RECYCLE
2 items for FREE

October 25, 2025

8AM - 12PM

Spring Lake Park City Hall

1301 81st Ave NE

SLP/up to \$55 value

LIMIT 1 COUPON PER HOUSEHOLD

**Residents are responsible for
any costs above \$55.00**



RECYCLE
2 items for FREE

November 8, 2025

8AM - 12PM

Recycle Technologies

10040 Davenport St NE, Blaine

SLP/up to \$30 value

LIMIT 1 COUPON PER HOUSEHOLD

**Residents are responsible for
any costs above \$30.00**

RECYCLE 2 ITEMS FOR FREE WITH COUPON

- Appliances
- Lamps / Bulbs / Ballasts / Fixtures
DO NOT TAPE LAMPS TOGETHER
- TV's & Monitors (prices vary by size)
- Car / Truck tires without rim
- Hard Drive Shredding
- Mattresses & Box Springs (all sizes)
- Batteries (small household & rechargeable)
- Propane tanks & dry chemical fire extinguishers
- Exercise equipment

- Miscellaneous electronics
 - Printers, scanners, fax machines
 - Commercial copiers
 - Small electronics (DVD/VCR players, stereos, speakers, coffee makers, record players, toasters/toaster ovens, landline phones, small appliances, video game consoles, etc.)

RECYCLE FOR FREE WITHOUT COUPON

- Holiday lights (**string only, no rope lights or decorations**)
- Scrap metal (must be clean with all non-metal material removed)
- Tablets, servers, cables, laptops & cell phones (if server or laptop contains a hard drive add \$7 each)
- Sealed lead acid car batteries
- Paper shredding - 2 box limit (no laminated or carbon papers or 3-ring binders. Paperclips & staples are okay.)

ITEMS NOT ACCEPTED

- Child car seats
- Furniture or household goods
- Garbage
- Building, construction, or compost materials
- Household Hazardous Waste (paint, oil, etc.)
- Carbon Monoxide & smoke detectors (can be thrown in the trash after removing battery)

Payment accepted: Cash or check ONLY

****Small bills appreciated****

Recycle Technologies
reserves the right to refuse
items.

Please **DO NOT** drop off
items before or after the
event.

Questions on the event?

Contact Haley Morrison
763-792-7240 | hmorrison@slpmn.org

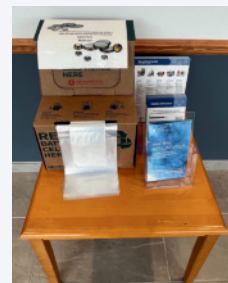
These events are funded by the Anoka County Board of
Commissioners & State SCORE funds (Select Committee on
Recycling & the Environment)

Recycle Smart-Keep These Items Out of Your Curbside Carts

- **Batteries and Other Hazardous Materials**

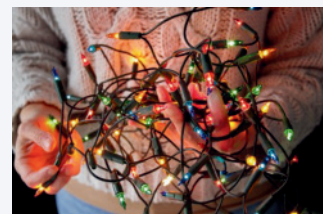
Batteries and Battery Enclosed Electronics (household and rechargeable) are recyclable at City Hall and should not be included in your curbside trash or recycling carts. Cell phones are the most common hazard.

Why: Batteries and electronics, with non-removable batteries, can explode and start fires if crushed or punctured. As batteries get stronger, this is occurring more and more. Every month garbage trucks and recycling facilities experience fires when batteries are improperly thrown away.



- **Holiday Lights and Extension Cords**

Long stringy items like holiday lights and extension cords get caught up on the machinery at recycling sorting facilities. These should be recycled at drop-off locations. At Spring Lake Park, you can drop off your holiday lights and extension cords at city hall during business hours.



Myth: My recycling doesn't actually get recycled.

Fact: Minnesota has robust recycling programming, and Minnesota residents recycle over 2 million tons of recycling each year! With more than 100 companies using recycled material in their products! Plus, in Minnesota it is illegal to throw away recycling that is collected separately.

Used Eyeglass Program

Have old glasses laying around that you no longer need? Spring Lake Park Lions are happy to take them off your hands. They accept prescription glasses, non-prescription sunglasses, and reading glasses (frames with lenses intact—please no lenses without frames or frames without lenses). Spring Lake Park residents can bring their unwanted glasses and place them in the donation box located in the Link area at City Hall.



City Hall Recycling Drop-Off

Spring Lake Park offers a FREE recycling drop-off program for all Spring Lake Park residents. The drop-off site is located inside the Link at City Hall and is available to residents Monday through Friday from 8:00 AM–4:30 PM.



Accepted Items:

- Cell phones (with or without batteries)
- Laptops, iPads, tablets
- PC's (computer towers)
- Hard drives
- Holiday string lights
- Small hand-held electronics
- Gaming consoles (Xbox, PlayStation, etc.)
- Ink Cartridges
- Batteries (single-use and rechargeable)
 - There is a separate container for batteries located in the Link area. **Please do not place batteries in the Electronics container.**



Fall Lawn Care Tips that Save Money and Protect Water

Information provided by the Coon Creek Watershed District | www.cooncreekwd.org

This fall you can help your grass, save on your water bill, and prevent water pollution all at the same time – give these tips a try!

1. Mulch leaves and grass with your lawnmower to return nutrients to the soil while keeping them off the street and out of our waters!
2. Test your soil before fertilizing. A \$21 soil test through the University of Minnesota can tell you exactly what fertilizer, if any, your specific soil needs. <http://soiltest.cfans.umn.edu/>
3. Maintain a height of three (3) inches. Taller grass reduces weeds, encourages root growth, and helps withstand drought.
4. Follow herbicide directions. Fall is a great time for treating perennial broadleaf weeds such as dandelions and creeping Charlie. However, these chemicals can be pollutants if not applied correctly. Always follow directions and properly dispose of unused herbicide at the Anoka County Household Hazardous Waste Facility.

Lastly, always make sure to properly dispose of yard waste by mulching, composting, or bagging. Never dump yard waste into ditches, wetlands, streets, or storm drains. Fertilizers, exposed soil, grass clippings, and other yard waste contain pollutants such as phosphorus. When introduced to our waterways, these pollutants can lower water quality and promote algae growth. Soil, sediment, and grass clippings can also clog storm drains and reduce the ability of ponds, creeks and wetlands to hold floodwaters.



Funding for Water Education Activities & Projects

Have a water-related education project that needs funding? Coon Creek Watershed District has grant money available for water resource education activities and projects that help fulfill its mission to protect and preserve local water resources. Grants range from \$500 - \$1,000 and are reimbursement-based.

Eligible applicants include non-profits, K-12 educators, businesses, and civic groups located within the Coon Creek Watershed boundaries. Examples of eligible activities include field trips to nature centers and outdoor spaces, classroom supplies for water-related lessons, native plants and supplies for volunteer planting projects, educational workshops, exhibit rentals, and continuing education opportunities like Project WET.

For more information, visit www.cooncreekwd.org/grants-library or email info@cooncreekwd.org.

Please Pick Up After Your Pet

Pet ownership brings joy to our community—but with it comes responsibility. One of the simplest yet most important things pet owners can do is **pick up after their pets**.

When pet waste is left on lawns, sidewalks, or in parks, rainwater washes it into storm drains. From there, it flows directly into our local lakes, streams, and rivers—untreated. Pet waste contains harmful bacteria, parasites, and nutrients that can contaminate water, contribute to algae blooms, and create public health risks.

As part of the City's federally required **MS4 (Municipal Separate Storm Sewer System) permit program**, we are responsible for preventing pollutants, including pet waste, from entering our stormwater system. Properly picking up after your pet is a small action that makes a big difference in protecting clean water for everyone.

City ordinance requires all pet owners to promptly clean up after their animals. Failure to do so is a misdemeanor. Please carry bags when walking your pets, and place waste in your garbage container at home.

By working together, we can keep our neighborhoods clean, our parks enjoyable, and our waterways safe for generations to come.





1301 81st Ave NE
Spring Lake Park, MN 55432

Dated Material
Postmaster: Time Sensitive Material

Upcoming Events

City Council Meeting	Oct 6
City Council Meeting	Oct 20
Recycling Day (8AM-Noon City Hall)	Oct 25
Planning Commission Meeting	Oct 28
City Council Meeting	Nov 3
Recycling Day (8AM-Noon Recycle Technologies)	Nov 8
Office Closed (Veterans Day)	Nov 11
City Council Meeting	Nov 17
Leaf drop-off Ends (City Hall)	Nov 23
Planning Commission Meeting	Nov 24
Office Closed (Thanksgiving)	Nov 27
Office Closed	Nov 28
City Council Meeting	Dec 1
City Council Meeting	Dec 15
Office Closed	Dec 24
Office Closed	Dec 25
Office Closed	Dec 26
Office Closed (New Year's Day)	Jan 1
Office Closed	Jan 2
City Council Meeting	Jan 5
Office Closed (Martin Luther King Jr. Day)	Jan 19
City Council Meeting	Jan 20
Planning Commission Meeting	Jan 26

All meetings begin at 7:00 PM, and are held at City Hall,
1301 81st Ave NE.

**2026 Proposed Tax Levy Shows
Modest Increase**

The City Council has adopted the 2026 preliminary property tax levy at \$5,030,260, an overall increase of 6.54% compared to 2025. This includes the General Fund levy, which supports core City services such as police, fire, streets, parks, and recreation, and funding for capital improvements and street projects.

Key factors driving the increase include rising personnel costs, higher health insurance premiums, and added investments in public safety and infrastructure. At the same time, the City was able to reduce the annual debt service levy by \$30,000 through careful use of excess project funds, helping offset some of the cost growth.

For 2026, property taxes will continue to fund about 72% of the City's \$6.06 million General Fund budget, with the balance supported by intergovernmental aid, licenses, permits, and service fees.

The City Council will continue to review the proposed budget for potential reductions. The final levy can be the same or lower than the preliminary levy, but not higher.

A copy of the proposed budget is available on the City's website – www.slpmn.org. The City will hold its annual Truth in Taxation hearing on December 1, 2025 at 7:00 PM at City Hall, giving residents the opportunity to learn more about the budget and share feedback before final adoption.

**Fall Back-Daylight Savings Time Ends
November 2, 2025**

Remember to set your clocks back 1 hour and change the batteries in your Smoke and CO2 detectors.

